



**ENTELECHY GLOBAL**

November 16, 2015

# The Worldwide Leader

Hi-Tech/ Hi-Quality Services

Copyright © 2015, Entelechy Global, Inc.

---



# Contents

- Who We Are
- What We Do
- Delivered Value
- Best-in-Class Service
- Best –in-Class Infrastructure
- Best-in-Class Methodology
- Highly Experienced Team
- Range of Services
- Pricing Model
- Global Experience
- Growing List of Customers
- World-Class Support
- Getting Started
- Next Steps



## Who We Are

- Team with a highly successful and proven track record of providing PCB engineering services
- Customer and process focused
- Committed to quality, reliability and dependability
- Over 300 years of combined experience in CAM engineering and Automation
- Truly independent entity – no reliance or influence from a single large customer

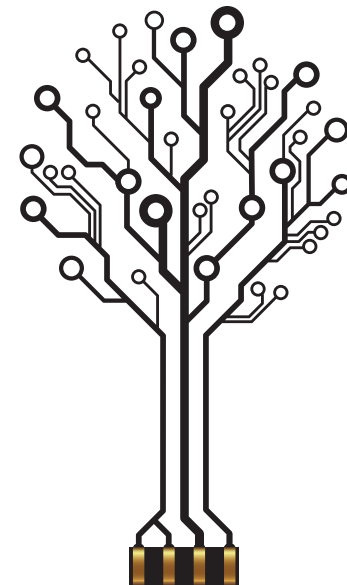


# What We Do

- Provide high quality and reliable engineering services at a lower cost
- Incorporate highly automated processes and workflow to optimize delivery and quality
- Provide 1 day turn-around for most jobs
- Deliver quick-turn jobs in hours
- Provide on-demand capacity including off-shift and weekend capability

# Delivered Value

- Manage work-load surges
- Build redundancy
- High levels of automation – reduced dependency on key personnel
- Solution to quick-turn engineering needs
- Lower overall cost





# Delivered Value

- We eliminate your headaches
  - Hiring, training, re-training, and retaining skilled engineers
  - Eliminate the total cost of a full-time staff employee (vacation, bonus, overhead, insurance, etc.)
  - Infrastructure and communication costs
  - Redundancy
    - Assured availability of contracted capacity for 52 weeks / year
    - Back-up power and internet connectivity 24x7
    - Back-up hardware to ensure 100% uptime



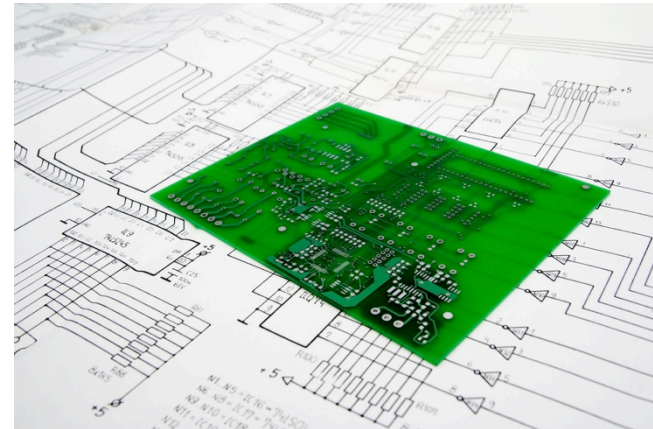
# Delivered Value

	In-House	Entelechy
Availability	48 weeks	52 weeks
Over-head cost	> 30%	0%
Scalability	Limited	Unlimited
Redundancy	Variable	Bullet-Proof 100%
Operational Efficiency	Status Quo	Continual Improvement Through Automation
Total Cost	Fixed	Significantly Lower



# Best-in-Class Services

- Pre-CAM, CAM, Post-CAM
  - Genesis
  - U-CAM
  - CAM350
- Advanced Automation
- Custom Script Writing







# Best-in-Class Infrastructure

- Back-up Power Systems
- Redundant Internet Connectivity
- Redundancy for all aspects of service delivery
- Access of large pool of skilled resources
- Years of zero down-time track record





# Best-in-Class Methodology

- Target automation of tasks when possible
- Process standardization where ever possible
- Provide transparency to job status – provide on-line status updates
- Process simplification where possible
- Ensure automation stays in sync with changing requirements





# Highly Experienced Team



- Over 300 years combined experience
- Six-sigma quality delivery
- Focused on sustained process improvement and automation



# Highly Experienced Team

- Mehul J. Dave – CEO
  - 30+ years experience in PCB industry
  - Founder of Cimnet Systems – leading provider of ERP and Engineering systems
  - Experience in all facets of business – from start-up to running a multi-national mature business



# Highly Experienced Team

- Shreedara S. P., Director Engineering Services (Genesis)
  - 20+ years experience front-end PCB Engineering
  - Worked in PCB companies in US, Thailand, India
  - Deep experience in CAM systems – specifically Genesis, InCAM, UCAM, and CAM 350
  - Successfully lead several Engineering Outsourcing projects over the last 7 years



# Highly Experienced Team

- H. D. Shreenivasa, Director Engineering Services (U-CAM)
  - 20+ years experience front-end PCB Engineering
  - Worked in PCB companies in Europe and Asia
  - Deep experience in CAM systems – specifically UCAM, Genesis and CAM 350
  - Successfully lead several Engineering Outsourcing projects over the last 7 years



# Range of Services

- Quote Data Processing
- Pre-CAM
- CAM
- Post-CAM
- Ability to handle complex jobs with high layer count
  - HDI
  - Controlled Impedance
  - Buried Components
  - Flex / Rigid Flex

# Global Coverage



- Leverage our global reach and expertise
- Over 30 years experience
  - US
  - Canada
  - Western Europe
  - Asia





# Europe Partnership

MIE – Multiline International Europa L. P.

Paul Waldner

Benzstrasse 13

D - 61352 Bad Homburg

Phone: +49 (0) 6172 / 76070

Fax: +49 (0) 6172 / 760750

Email: [info@mie.de](mailto:info@mie.de)



# World-Class Support



- Mutli-modal support
  - Phone / Skype
  - Email
  - Web
- 24 x 7 x 365
- Serviced directly by our engineering staff



# Getting Started

- Phase I – Evaluation Phase
  - Senior CAM Engineer assigned to your project
    - On-site option
    - Gain expertise in company specific critical issues
    - Prove ability to handle your work
    - Establish working relationship with key staff
    - Work on 'live' jobs
    - Understand various 'end-customer' specifications and requirements
  - Risk-free trial



# Getting Started

- Phase II – Long-term contract
  - Establish ourselves as a virtual extension of your engineering operations
  - Replicate your CAM environment that is verified and certified to provide consistent results
  - Team of fully trained CAM engineers to assure redundancy and capacity
  - Implement our proven methodology to continuously measure and assure productivity metrics

## Next Steps...



- Sample Jobs
- On-site visit
- Pilot Project
- Establish long-term partnership



**ENTELECHY GLOBAL**

November 16, 2015

## Entelechy Global, Inc.

2905 Lake East Rd.

Suite 150

Las Vegas, NV 89117

Phone: +1.702.570.2210

Web: [www.entelechyglobal.com](http://www.entelechyglobal.com)

Email: [sales@entelechyglobal.com](mailto:sales@entelechyglobal.com)

Copyright © 2015, Entelechy Global, Inc.